

# BOAT HOUSE BULLETIN®

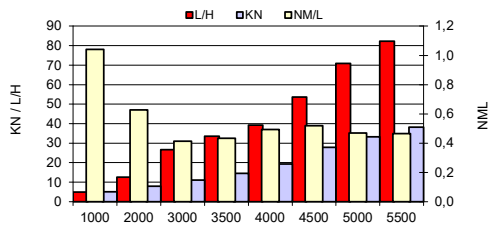


A Factual Report from Mercury Marine

TEST CONDITIONS	
Test Date	11.09.2020
Test Conductor	GF
Boat Weight as Tested (kg)	3390
Air Temperature (degrees C)	14
Elevation (m)	0
Sea State (calm / smooth / slight / moderate)	Smooth
Wind Velocity range (kn)	3
Fresh/Salt Water	Salt
Fuel Level at Testing (l)	100 %

PERFORMANCE SUMMARY	
Top Speed (kn @ rpm)	41,5 @ 5900
Acceleration 0 - 20 kn (seconds)	7,9
Acceleration 0 - 30 kn (seconds)	14,2
Best Fuel Economy (nm/l @ rpm)	0,5 @ 4500

### PERFORMANCE CURVE



PERFORMANCE DATA					
RPM	SPEED	FUEL CONSUMPTION	FUEL CONSUMPTION	RANGE	FUEL CONSUMPTION
RANGE	KN	L/H	NM/L	NM	L/NM
1000	5	4,8	1,0	309,0	1,0
2000	7,9	12,6	0,6	185,4	1,6
3000	11	26,6	0,4	123,6	2,4
3500	14,5	33,5	0,4	123,6	2,3
4000	19,3	39,2	0,5	154,5	2,0
4500	27,8	53,6	0,5	154,5	1,9
5000	33,3	70,8	0,5	154,5	2,1
5500	38,2	82,2	0,5	154,5	2,2
5800	40	93,8	0,4	123,6	2,3
Top RPM	40	93,8	0,4	123,6	2,3

ENGINE SPECIFICATIONS	
Number of Engines	1
Engine	Mercury verado
Horsepower	300
Cylinders	V8
Drive or gear model and ratio	1,85

BOAT SPECIFICATIONS	
Region/s sold	Norway
Manufacturer	Nordkapp boats
Website	<a href="https://www.nordkapp-boats.no/">https://www.nordkapp-boats.no/</a>
Boat Model	905 Grand Cupe
Boat Type	Pilot House
Material	Fiberglass
Length (m)	9,12
Beam (m)	2,98
Max hp Capacity	2x200hp
Fuel Tank Capacity (l)	309
Steering Type	PWR Steering
Dry Boat Weight (kg)	2550
Mounting Bolt Hole (outboard)	5 most upper

PROPELLER SPECIFICATIONS	
Part Number	
Part Number	
Part Number	
Part Number	8M0137906
Mercury Name	Rev 4 18''
Material	SS
Diameter/Pitch	14,6x18
Number of Blades	4



MERCURY MARINE PO BOX 1939 FOND DU LAC, WISCONSIN 54836-1939

©2015 Mercury Marine, All Rights Reserved. Results on individual boats may vary depending on many factors.

800-MERCURY MERCURYMARINE.COM

Boatbuilder authorize Mercury to publish the BHB on Mercury WEB site: Y/N

.This data is internal to Brunswick.