

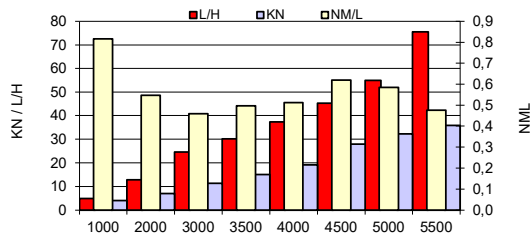
TEST CONDITIONS

Test Date	11.09.2020
Test Conductor	GF
Boat Weight as Tested (kg)	3390
Air Temperature (degrees C)	14
Elevation (m)	0
Sea State (calm / smooth / slight / moderate)	Smooth
Wind Velocity range (kn)	3
Fresh/Salt Water	Salt
Fuel Level at Testing (l)	100 %

PERFORMANCE SUMMARY

Top Speed (kn @ rpm)	39,5 @ 5980
Acceleration 0 - 20 kn (seconds)	7,2
Acceleration 0 - 30 kn (seconds)	13,6
Best Fuel Economy (nm/l @ rpm)	0,6 @ 4500

PERFORMANCE CURVE



PERFORMANCE DATA

RPM	SPEED	FUEL CONSUMPTION		RANGE	
		L/H	NM/L	NM	L/NM
1000	4	4,9	0,8	247,2	1,2
2000	7	12,8	0,5	154,5	1,8
3000	11,3	24,6	0,5	154,5	2,2
3500	15	30,2	0,5	154,5	2,0
4000	19,1	37,3	0,5	154,5	2,0
4500	28	45,2	0,6	185,4	1,6
5000	32,2	55	0,6	185,4	1,7
5500	35,9	75,5	0,5	154,5	2,1
5980	39,5	89,2	0,4	123,6	2,3
Top RPM	39,5	89,2	0,4	123,6	2,3

ENGINE SPECIFICATIONS

Number of Engines	1
Engine	Mercury verado
Horsepower	250
Cylinders	V8
Drive or gear model and ratio	1,85

BOAT SPECIFICATIONS

Region/s sold	Norway
Manufacturer	Nordkapp boats
Website	https://www.nordkapp-boats.no/
Boat Model	905 Grand Coupe
Boat Type	Pilot House
Material	Fiberglass
Length (m)	9,12
Beam (m)	2,98
Max hp Capacity	2x200hp
Fuel Tank Capacity (l)	309
Steering Type	PWR Steering
Dry Boat Weight (kg)	2550
Mounting Bolt Hole (outboard)	5 most upper

PROPELLER SPECIFICATIONS

Part Number	
Part Number	
Part Number	
Part Number	857024A46
Mercury Name	Rev 4 17''
Material	SS
Diameter/Pitch	14,6x17''
Number of Blades	4



MERCURY MARINE PO BOX 1939 FOND DU LAC, WISCONSIN 54936-1939

©2015 Mercury Marine, All Rights Reserved. Results on individual boats may vary depending on many factors.

800-MERCURY MERCURYMARINE.COM

Boatbuilder authorize Mercury to publish the BHB on Mercury WEB site: Y

This data is internal to Brunswick.