

A Factual Report from Mercury Marine

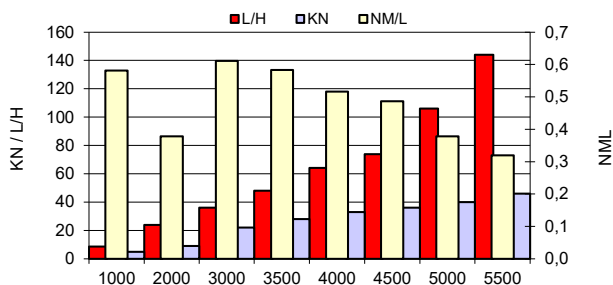
TEST CONDITIONS

Test Date	2020-11-12
Test Conductor	Sven Jansson
Boat Weight as Tested (kg)	aprx 3450 kg
Air Temperature (degrees C)	7
Elevation (m)	0
Sea State (calm / smooth / slight / moderate)	Smooth
Wind Velocity range (kn)	
Fresh/Salt Water	Fresh
Fuel Level at Testing (l)	200 ltr

PERFORMANCE SUMMARY

Top Speed (kn @ rpm)	48 knot @ 5850
Acceleration 0 - 20 kn (seconds)	6,9 sec
Acceleration 0 - 30 kn (seconds)	9,5 sec
Best Fuel Economy (nm/l @ rpm)	0,6 @ 3500

PERFORMANCE CURVE



PERFORMANCE DATA

RPM	SPEED	FUEL CONSUMPTION	FUEL CONSUMPTION	RANGE	SOUND
RANGE	KN	L/H	NM/L	NM	dB-A
1000	5	8,6	0,6	180	
2000	9	23,8	0,4	117	
3000	22	36	0,6	189	
3500	28	48	0,6	180	
4000	33	64	0,5	159	
4500	36	74	0,5	150	
5000	40	106	0,4	117	
5500	46	144	0,3	99	
5800	48	152	0,3	98	
				#DIV/0!	

ENGINE SPECIFICATIONS

Number of Engines	2
Engine	F225
Horsepower	2 x 225
Cylinders	V6
Drive or gear model and ratio	1.85:1
Engine Length (in)	25"

BOAT SPECIFICATIONS

Region/s sold	Sweden
Manufacturer	Nordkapp boats
Website	www.nordkapp-boats.eu
Boat Model	905 Gran Coupe
Boat Type	Pilot house
Material	Fiberglass
Length (m)	9.12
Beam (m)	2.98
Max hp Capacity	2 x 200 hp
Fuel Tank Capacity (l)	309
Steering Type	Power steering
Dry Boat Weight (kg)	2550 kg
Mounting Bolt Hole (outboard)	#2

PROPELLER SPECIFICATIONS

Part Number	8M0040400
Part Number	8M0040401
Part Number	
Part Number	
Mercury Name	Enerzia ECO
Material	Stainless steel
Diameter/Pitch	16x19"
Number of Blades	3

Active trim P 1 / 3

