

BOAT HOUSE BULLETIN®



A Factual Report from Mercury Marine

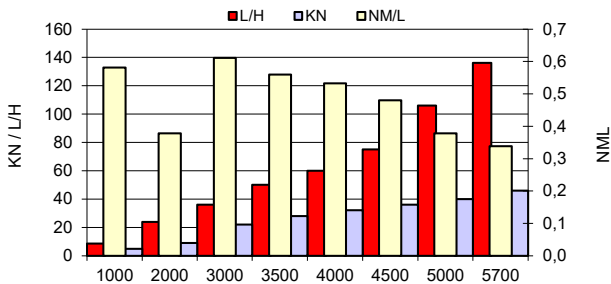
TEST CONDITIONS

Test Date	2020-11-10
Test Conductor	Sven Jansson
Boat Weight as Tested (kg)	aprx 3450 kg
Air Temperature (degrees C)	7
Elevation (m)	0
Sea State (calm / smooth / slight / moderate)	Smooth
Wind Velocity range (kn)	
Fresh/Salt Water	Fresh
Fuel Level at Testing (l)	280 lit

PERFORMANCE SUMMARY

Top Speed (kn @ rpm)	46 knot @ 5700 rpm
Acceleration 0 - 20 kn (seconds)	7,2 sec
Acceleration 0 - 30 kn (seconds)	10 sec
Best Fuel Economy (nm/l @ rpm)	0,6 @ 3500

PERFORMANCE CURVE



PERFORMANCE DATA

RPM	SPEED	FUEL CONSUMPTION	FUEL CONSUMPTION	RANGE	SOUND
RANGE	KN	L/H	NM/L	NM	dB-A
1000	5	8,6	0,6	180	
2000	9	23,8	0,4	117	
3000	22	36	0,6	189	
3500	28	50	0,6	173	
4000	32	60,1	0,5	165	
4500	36	75	0,5	148	
5000	40	106	0,4	117	
5700	46	136	0,3	105	

ENGINE SPECIFICATIONS

Number of Engines	2
Engine	F200
Horsepower	200 x 2
Cylinders	V6
Drive or gear model and ratio	1.85:1
Engine Length (in)	25"

BOAT SPECIFICATIONS

Region/s sold	Sweden
Manufacturer	Nordkapp boats
Website	www.nordkapp-boats.eu
Boat Model	905 Gran Coupe
Boat Type	Pilot house
Material	Fiberglass
Length (m)	9.12
Beam (m)	2.98
Max hp Capacity	2 x 200 hp
Fuel Tank Capacity (l)	309
Steering Type	Power steering
Dry Boat Weight (kg)	2550 kg
Mounting Bolt Hole (outboard)	#2

PROPELLER SPECIFICATIONS

Part Number	8M0040396
Part Number	8M0040397
Part Number	
Part Number	
Mercury Name	Enerzia ECO
Material	Stainless steel
Diameter/Pitch	16x18"
Number of Blades	3

Active Trim	P 1 / 3
-------------	---------



MERCURY MARINE PO BOX 1939 FOND DU LAC, WISCONSIN 54936-1939

©2015 Mercury Marine, All Rights Reserved. Results on individual boats may vary depending on many factors.

800-MERCURY MERCURYMARINE.COM